

Class 500 low-floor, articulated EMU for Biel-Täuffelen-Ins-Bahn (BTI)



Stadler Bussnang AG

CH-9565 Bussnang
Phone +41 (0)71 626 20 20
Fax +41 (0)71 626 20 21
E-mail: stadler.bussnang@stadlerrail.ch

Stadler Pankow GmbH

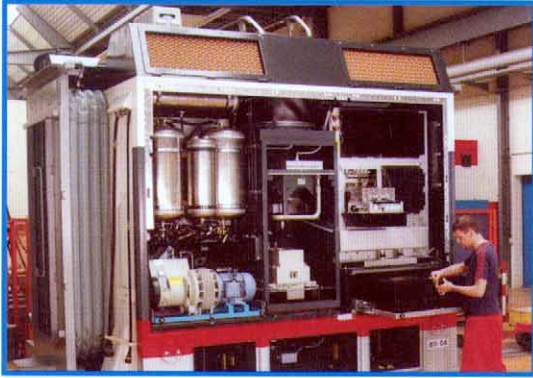
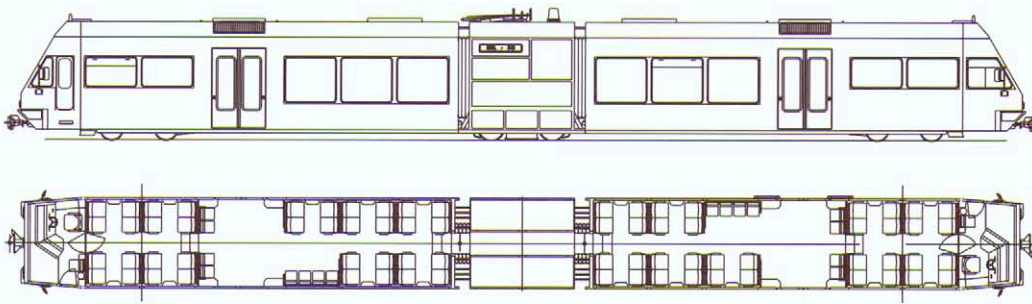
Lessingstraße 102
D-13158 Berlin
Phone +49 (0)30 91 91-15 00
Fax +49 (0)30 91 91-21 50
E-mail: stadler.pankow@stadlerrail.de

Stadler Altenrhein AG

CH-9423 Altenrhein
Phone +41 (0)71 858 41 41
Fax +41 (0)71 858 41 42
E-mail: stadler.altenrhein@stadlerrail.ch

Towards the end of 1994, BTI, a member of the Aare-Seeland mobil (ASm) group, purchased the first built GTW 2/6 articulated EMU.

High low-floor content, low investment costs, but with no reduced concessions in terms of comfort, maintenance and repairs were decisive factors for the award of the contract.



Technical Features

- Spacious multi-purpose vestibule in entrance area
- End cars of extruded aluminium sections
- Central power module 700 mm wide gangway for passengers
- Bright, friendly interior with large window areas
- Adtranz electrical equipment: water-cooled GTO power converters with MICAS-S 2 traction control system
- Passenger information system with destination displays and emergency call-back stations for passengers
- Multiple-unit control for up to 3 vehicles

Vehicle Data

Customer	Are-Seeland mobil, Langenthal, Switzerland
Designation	Be 2/6, 501 ÷ 507
No. of vehicles	7
Start service	1997
Route operated	Biel – Täuffelen – Ins
Gauge	1.000 mm
Length over buffers	30.100 mm
Vehicle width	2.700 mm
Vehicle height	3.900 mm
Floor height	
- Low floor	370 mm
- High floor	845 mm
Door width	1.350 mm
Longitudinal strength	800 kN
Seating capacity 2nd Cl.	88
Standing capacity (4 Pers./m ²)	92
Tare weight	37 t
Axle arrangement	2' Bo 2'
Bogie wheelbase	
- Power bogie	1.800 mm
- Trailer bogie	1.600 mm
Powered wheel diameter, new	750 mm
Trailer wheel diameter, new	660 mm
Catenary supply voltage	1.200 VDC
Max. speed	80 km/h
Max. acceleration	1 m/s ²
Max. power at wheel rim	592 kW
Continuous power at wheel rim	320 kW
Starting effort	65 kN